

INSTALLATION MANUAL

11591

Level of Difficulty

Difficult

Installation difficulty levels are based on time and effort involved and may vary depending on the installer level of expertise, condition of the vehicle and proper tools and equipment.

Weight Carrying Capacity

Gross trailer weight (GTW)	2,000 lbs.
Tongue weight (TW)	200 lbs.

Parts List

Item	Qty	Description
1	8	Hex bolt, M8-1.25 x 35mm, CL8.8
2	8	Conical-toothed washer, 3/8"

Tools Required

Torque wrench	Tape measure
Socket, 12mm	Phillips screwdriver
Socket, 13mm	Flathead screwdriver
Socket extension, 6"	Paint marker
Allen wrench, 5mm	Cut-off wheel
Die grinder	Safety glasses

* For a tools reference guide visit curtmfg.com/trailer-hitch-installation

⚠ WARNING

Never exceed the vehicle manufacturer's recommended towing capacity.

Product Photo



NOTICE

Visit www.curtmfg.com for a full-color copy of this instruction manual, as well as helpful videos, guides and much more!

Before you begin installation, read all instructions thoroughly.

Proper tools will improve the quality of installation and reduce the time required.

This installation requires:

- Trimming of the rear bumper and fascia panel

Periodic inspection of the trailer hitch should be performed to ensure all mounting hardware remains tight and structural components are secure.

To help prevent damage to the product or vehicle, refer to the specified torque specifications when securing hardware during the installation process.

SAFETY INSTRUCTIONS

Safety glasses should be worn at all times while installing this product.

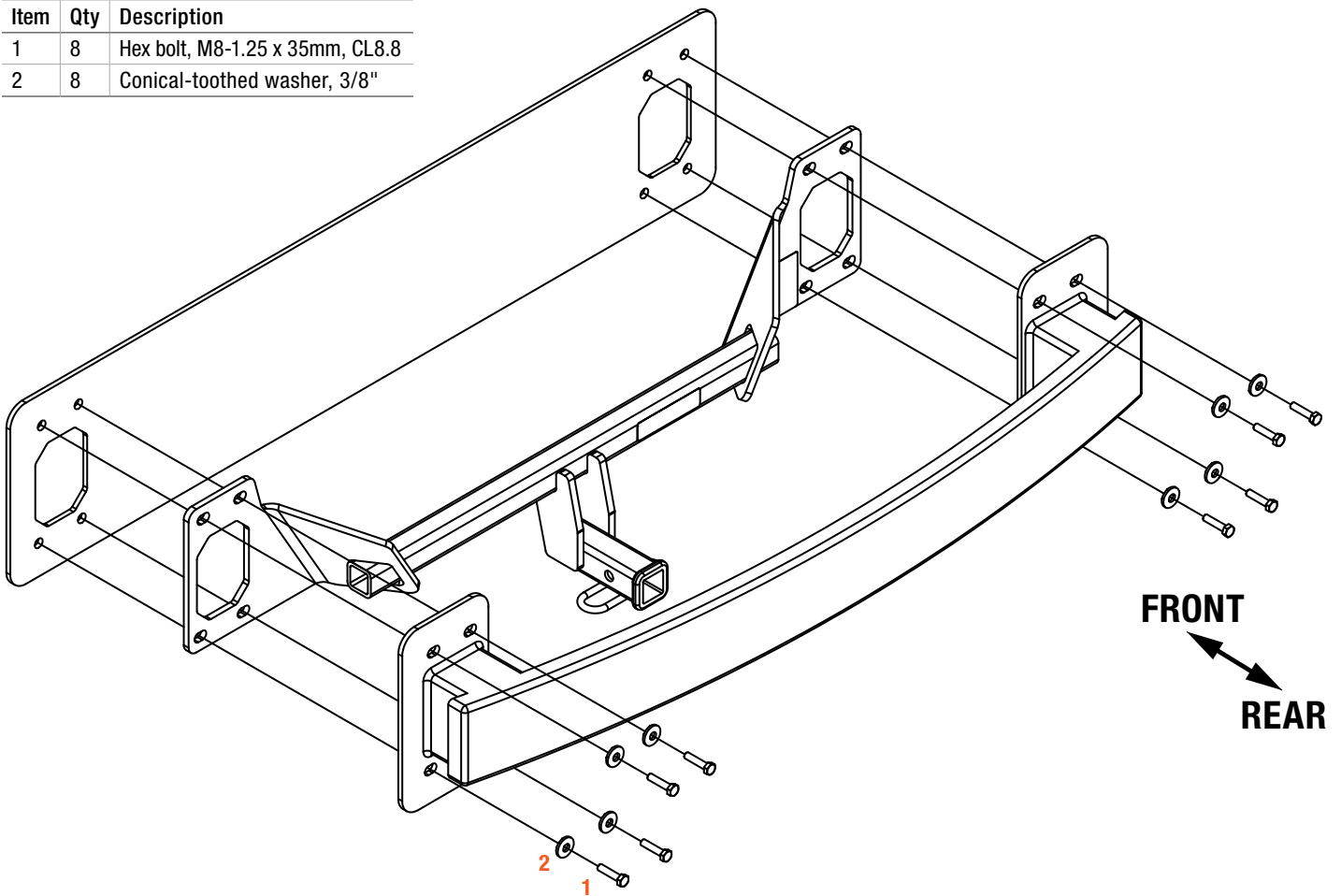
Product Registration and Warranty

CURT stands behind our products with industry-leading warranties. To get copies of the product warranties, register your purchase or provide feedback, visit: warranty.curtgroup.com/surveys

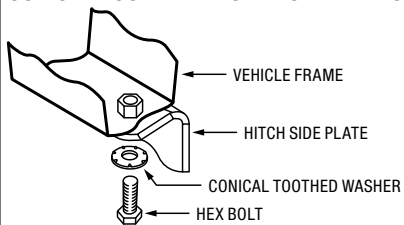
ASSEMBLY

Parts List

Item	Qty	Description
1	8	Hex bolt, M8-1.25 x 35mm, CL8.8
2	8	Conical-toothed washer, 3/8"



CONICAL TOOTHED WASHER ORIENTATION



Step 1

Open the trunk and remove the two hex screws securing the rear bumper fascia with a 5mm allen wrench as shown. One on each side of the vehicle.

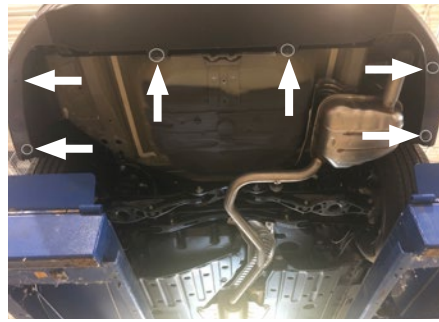
2022 models and newer: Remove the taillight finish plate to expose threaded fastener. Use a 10mm socket to remove the fastener. There will be one fastener located on each side of the vehicle.



Step 2

Using short Philips and flathead screwdrivers, remove the screws and plastic rivets in the fascia panel as shown.

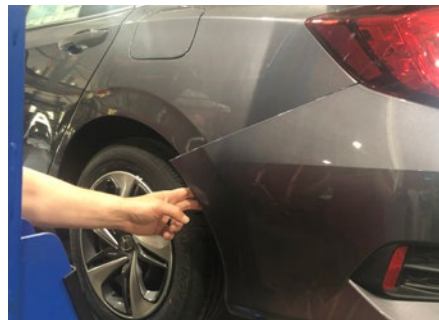
2022 models and newer: The upper-most fastener inside the wheel well is slightly hidden and is securing the bumper fascia right at the fascia seam line.



Step 3

Gently pull the fascia up from the rear wheel trim panel on each side of the vehicle. Work up to the taillights and continue to remove along the bottom of the taillights to the bottom of the trunk.

After the panel is loose all around, remove the bumper fascia and set it aside.



Step 4

Remove the eight bolts securing the bumper.

⚠ CAUTION

Hold the bumper while removing the last two bolts on each side to avoid the bumper dropping.

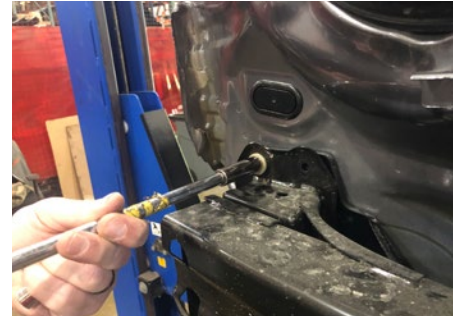


Step 5

Set the bumper on top of the trailer hitch.

Raise the hitch and bumper into position as shown and secure the bumper and hitch with the provided M8 hex bolts (#1) and conical-toothed washers (#2).

Tighten all hardware with a torque wrench and 13mm socket to 16 lb-ft.



Step 6

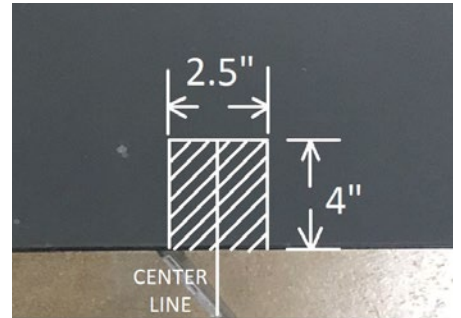
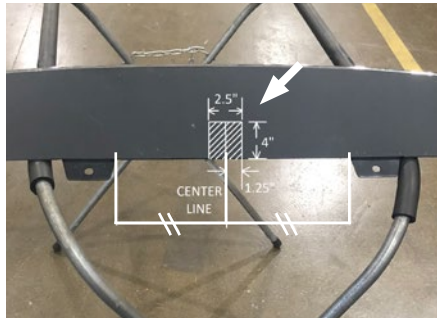
To avoid interference with the bumper and fascia, use a die grinder with cut-off wheel to cut off part of the bumper as shown. Do this on both ends of the bumper.



Step 7

Cut a 4" x 2-1/2" opening in the center of the bumper fascia as shown.

Starting in the center of the vehicle, gently reinstall the fascia repeating Steps 1 - 3 in reverse order.



Final Installed Images



TOWING BASICS & SAFETY INFORMATION

For information on safely towing your trailer, visit curtmfg.com/understanding-towing.